

Coliseum C860, C1260 & C1290 Installation Series Cabinets

- **Custom-Designed Drivers**
- **Hi-Slope Passive Crossovers**
- **CTL™ Driver Protection**
- **Curved Metal Grille**
- **Two-Part Epoxy Finish**
- **2-Way, Trapezoidal Configuration**
- **Flyware Equipped**
- **Comprehensive Warranty**



The Coliseum series of cabinets are designed for installation applications in small to mid-sized venues. The 100 Watt C860 is a two-way enclosure containing a single 8" speaker and a horn while the larger 150 Watt C1260 and C1290 each contain a single 12" speaker and a (tractrix or waveguide) horn.

Each enclosure features a 1" mylar, high frequency driver. The C860 and C1260 fire through a conical tractrix horn with a 60° x 60° dispersion pattern, while the C1290 fires through a 90°h x 40°v waveguide horn. Time-tested passive crossover networks (18 dB per octave) ensure sonic accuracy and CTL™ protection circuitry guards against damage to the high frequency drivers. In the lower frequency range the custom-designed woofer combines solid performance with outstanding reliability.

The cabinets feature inset metal input-jack plates which contain binding post and 1/4" TRS connectors. The enclosures are painted with a white two-part epoxy and incorporate curved, anti-resonance speaker grilles constructed of perforated 16 gauge steel. Both cabinets and grilles can be easily refinished and feature a grille clip attachment system for easy removal and recovering. Painstaking attention to details of design is evidenced by features such as the safety screw hidden under the embossed Yorkville logo which ensures that the grille does not inadvertently come loose.

The Coliseum series cabinets are constructed of highly rigid MDF and feature plywood baffles and braces. Their trapezoidal shape is conducive to array-mounting and minimizes lobing difficulties.



Flyware & Grille Clip Detail

The C860 has two flypoints and a pullback while the C1260 & C1290 have four flypoints and a pullback. The flypoints are steel reinforced and engineered to allow easy, flexible and safe enclosure suspension. The design of the C1260 and C1290 is particularly versatile and allows the units to be flown in virtually any orientation.

Yorkville's famous two year, no-fault transferable warranty* covers the Coliseum cabinets. If anything goes wrong within two years, we'll fix it for free... even if you break it!

** Warranty valid in USA and Canada Only*

United States

Yorkville Sound Inc.
4625 Witmer Industrial Estate
Niagara Falls, NY 14305
Tel: (716) 297-2920
Fax: (716) 297-3689



Canada

Yorkville Sound
550 Granite Court
Pickering, Ontario L1W 3Y8
Tel: (905) 837-8481
Fax: (905) 839-5776

Coliseum C860, C1260 & C1290

System Type: 2-Way, Trapezoid Cabinet with Curved Metal Grille

Drivers: HF: 1"

LF: 8"

PGM Power / Imp: 100 W / 8Ω

Sensitivity (1W @1M): 98 dB

Appx. Max. SPL: 118 dB

Overall Freq. Response: 80 – 16,000 Hz

HF Horn: Conical Tractrix

HF Horn Coverage Angle (h x v): 60° x 60°

Amp. Requirements: 100 W into 8Ω

Crossover Points: ~5000 Hz

Inputs: 2 x 1/4" TRS, Binding Posts

Driver Protection: CTL™ (current to light)

Cabinet Construction: 1/2" MDF with Plywood Baffles

Grille Construction: Curved 16 ga. Perforated Steel

Grille & Cabinet Finish: 2 Part White Epoxy

Rigging: Flyware – 2 Top & 1 Pullback
3/8" Threaded Holes x 5

Other Hardware: Quick-Clip Grille Attachment System

Dimensions: 16.0" x 13.5" x 12.75" x 7.9"

(H x W x D x Back Width) 40.6 x 34.3 x 32.4 x 20.0 cm

Weight: 26 lbs / 12 kg

C1260 / C1290

2-Way, Trapezoid Cabinet with Curved Metal Grille

HF: 1"

LF: 12"

150 W / 8Ω

98 dB

120 dB

70 – 16,000 Hz

Conical Tractrix / Waveguide

60° x 60° / 90° x 40°

150 W into 8Ω

~3800 Hz

2 x 1/4" TRS, Binding Posts

CTL™ (current to light)

3/4" MDF with Plywood Baffles

Curved 16 ga. Perforated Steel

2 Part White Epoxy

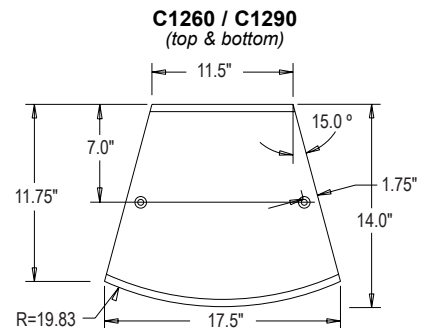
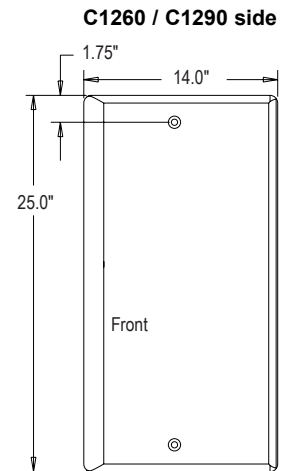
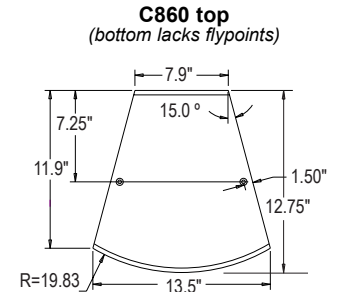
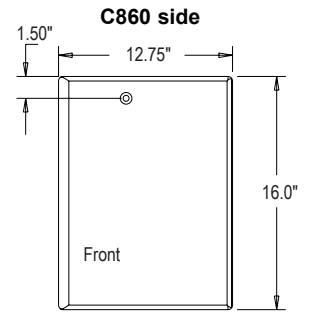
Rigging: Flyware – 2 Top, 2 Bottom, 1 Pullback
3/8" Threaded Holes x 9

Other Hardware: Quick-Clip Grille Attachment System

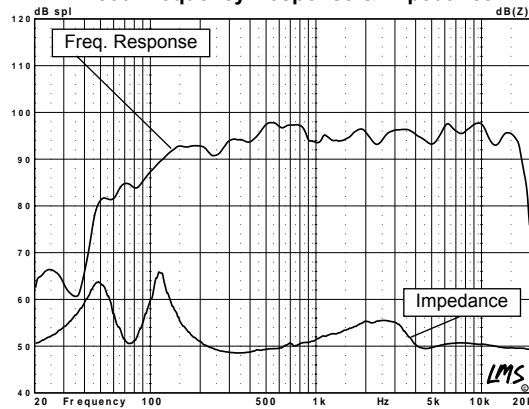
Dimensions: 25.0" x 17.5" x 14.0" x 11.5"

63.5 x 44.5 x 35.6 x 29.2 cm

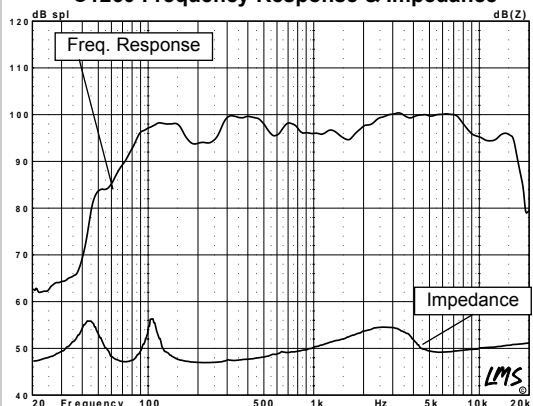
55 lbs / 25 kg



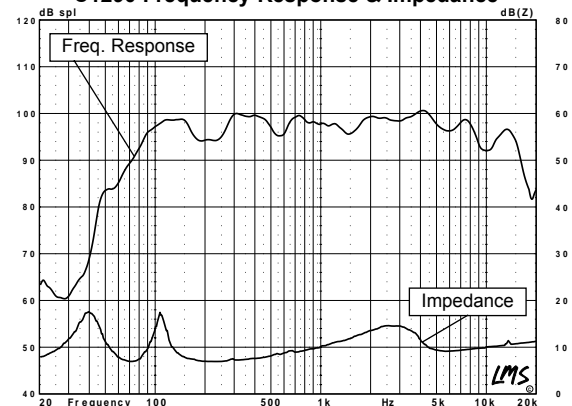
C860 Frequency Response & Impedance



C1260 Frequency Response & Impedance



C1290 Frequency Response & Impedance



Back Panel